



CHIAH CHYUN

Machinery

Double Y Axes, Servo Angular Driven Tool, Twin Built-In Spindle

Ø52mm Bar Capacity
Multiple Tooling Systems Exhibit Maximum
Versatility in Cutting Applications

CY2-52M / CY2-52MB

CNC TURNING MILLING CENTER



Machinery

CHIAH CHYUN MACHINERY CO., LTD.

No. 169, Alley 9, Lane 287, Sec. 3, Chung Shan Rd.,

Tantzu District, 42749, Taichung City, Taiwan.

TEL: +886-4-2533-7614 FAX: +886-4-2532-9524

E-mail: info@chiah-chyun.com

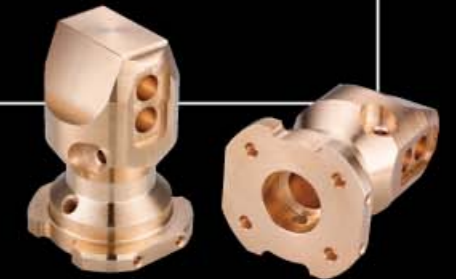
<http://www.chiah-chyun.com>

<http://cc.FHD.tw>



Designed for Precision Part Machining

- Automobile, motorcycle and bicycle parts.
- Electronic and electrical parts.
- Instrument parts.
- Any other precision parts.



Done-In-One Machining Reduces Setup Time

 Machinery's CY2 series is a **multitasking** for turning and milling **complicated parts**.

CY2

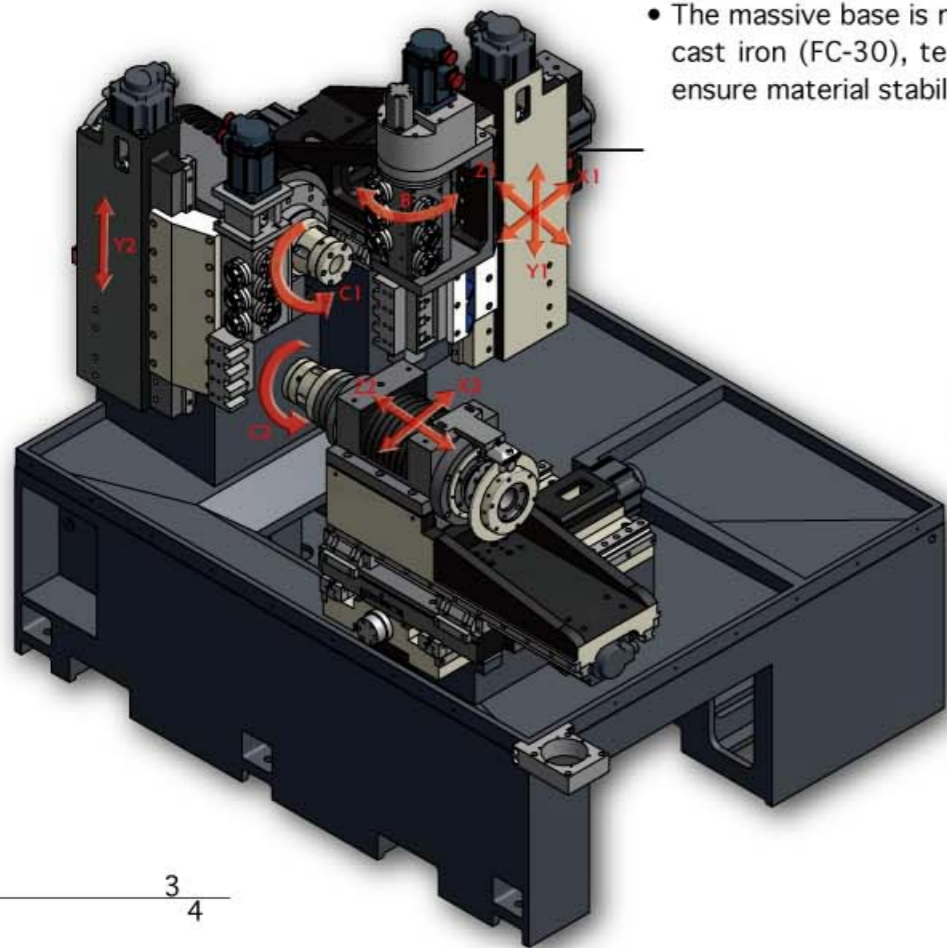
- Built-in motor for main and sub spindle
- Main and sub-spindle cut simultaneously
- Double Y axes
- Totally 18 driven tools
- 52mm bar capacity
- Max. 6000rpm in main and sub spindle
- 30 M/min axis rapid speed
- Servo control B-axis allowing angular drilling, tapping and milling
- B-axis indexing accuracy: 0.001°
- Fully enclosed splash guard



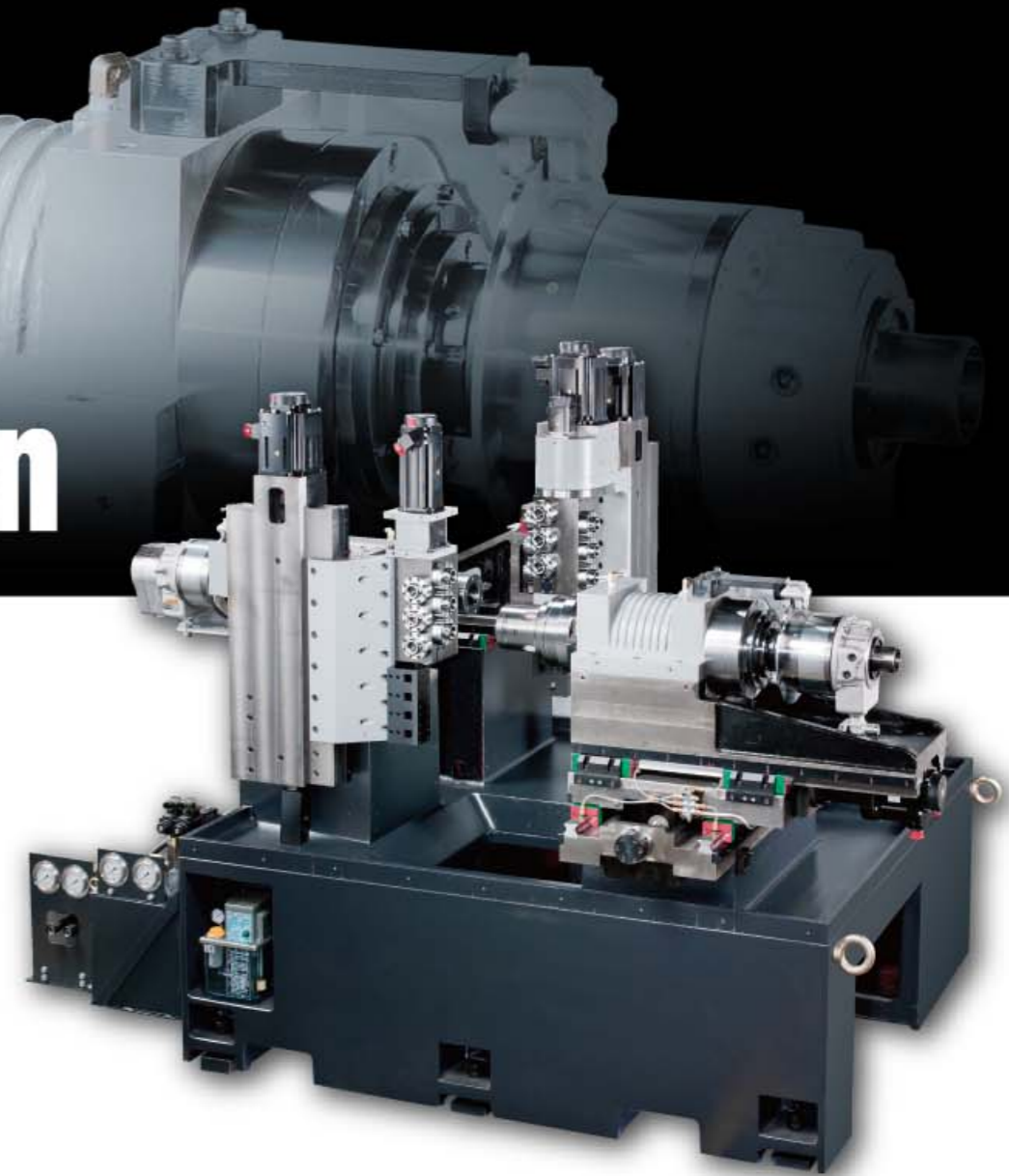
Advanced Structural Design

The new CY2-52MB CNC Lathe will dramatically cut your machining costs and boost productivity.

- The main and sub-spindle configuration allows the entire workpiece to be completely machined in one operation.
- Main spindle head is a fixed construction.
- Sub-spindle head moves on X2, Z2-axes.
- Heavy-duty roller type linear ways on all moving axes
- The massive base is manufactured from high quality cast iron (FC-30), tempered and stress relieved to ensure material stability year after year.



CY2-52MB

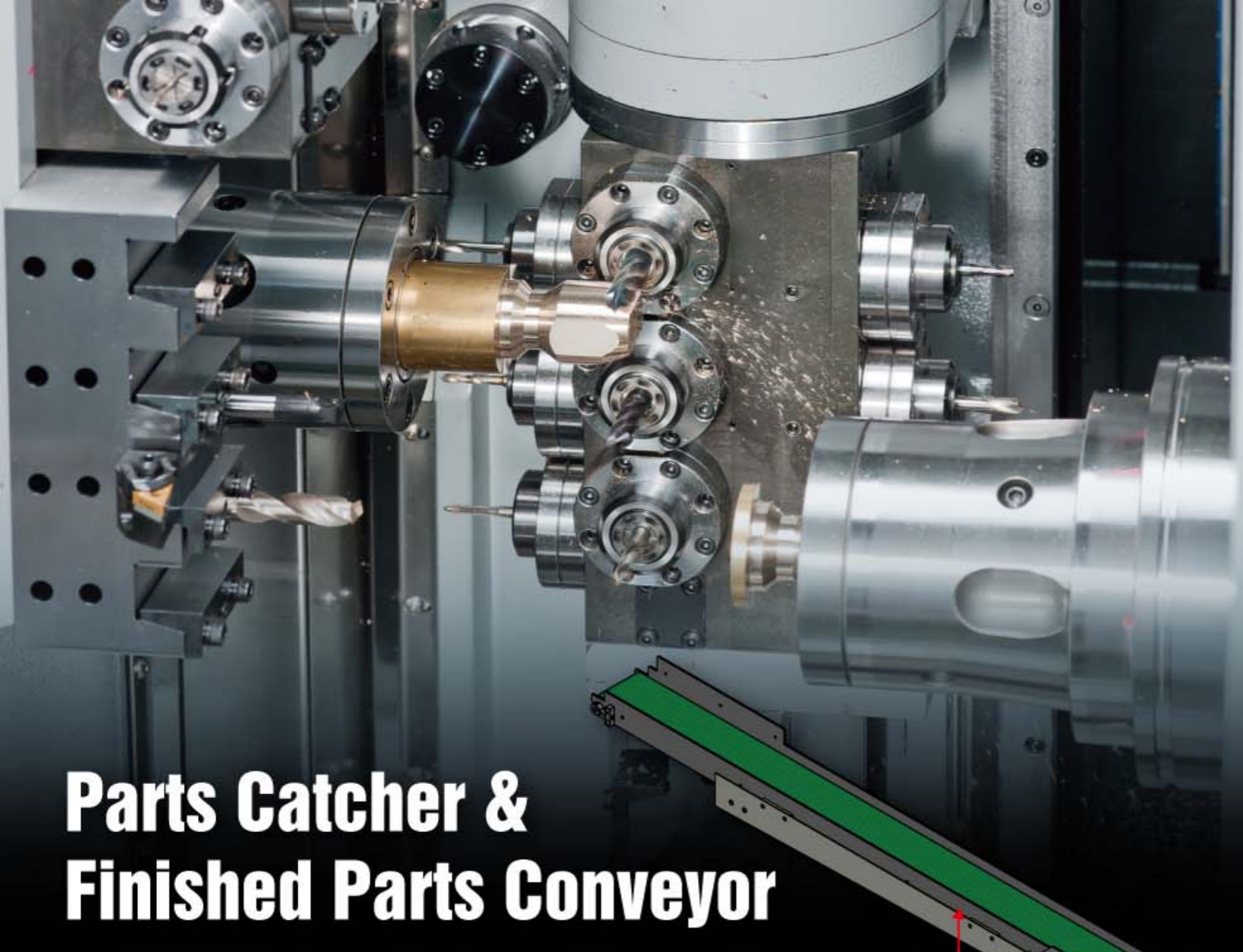


Main & Sub-Spindle

The built-in main and sub spindle feature high torque and high accuracy

- 6000 rpm spindle speed
- 7.5 kW servo motor drive
- Clamping system: collet
- Spindle oil chiller





Parts Catcher & Finished Parts Conveyor

- Once part machining is completed, the parts catcher takes the finished products and moves them to a conveyor to be transferred out of the machine.
- This prevents scratching of product surface, ensuring the highest quality of finished products.

FINISHED PARTS CONVEYOR

Dependable Control Circuit

The electrical control circuit is well designed and consists of high quality electronic components. It not only ensures maximum dependability of control performance, but also features longer life of the electronic components.



Syntec PC-based Control

- 15" TFT-LCD full-color screen
- USB interface

Built-In Spindle Oil Chiller

The standard accessory chiller device offer constant oil temperature into the built-in spindle, ensures long service life of the bearing.

Chip Conveyor

The CY2-52MB is equipped with link chain type chip conveyor with a chip cart as standard equipment.

Auto Bar Feeder (Optional)

When an auto bar feeder (optional) is used together with the machine, it may perform fully automatic operation. The bar feeder dramatically upgrades production efficiency, while saving labor costs.

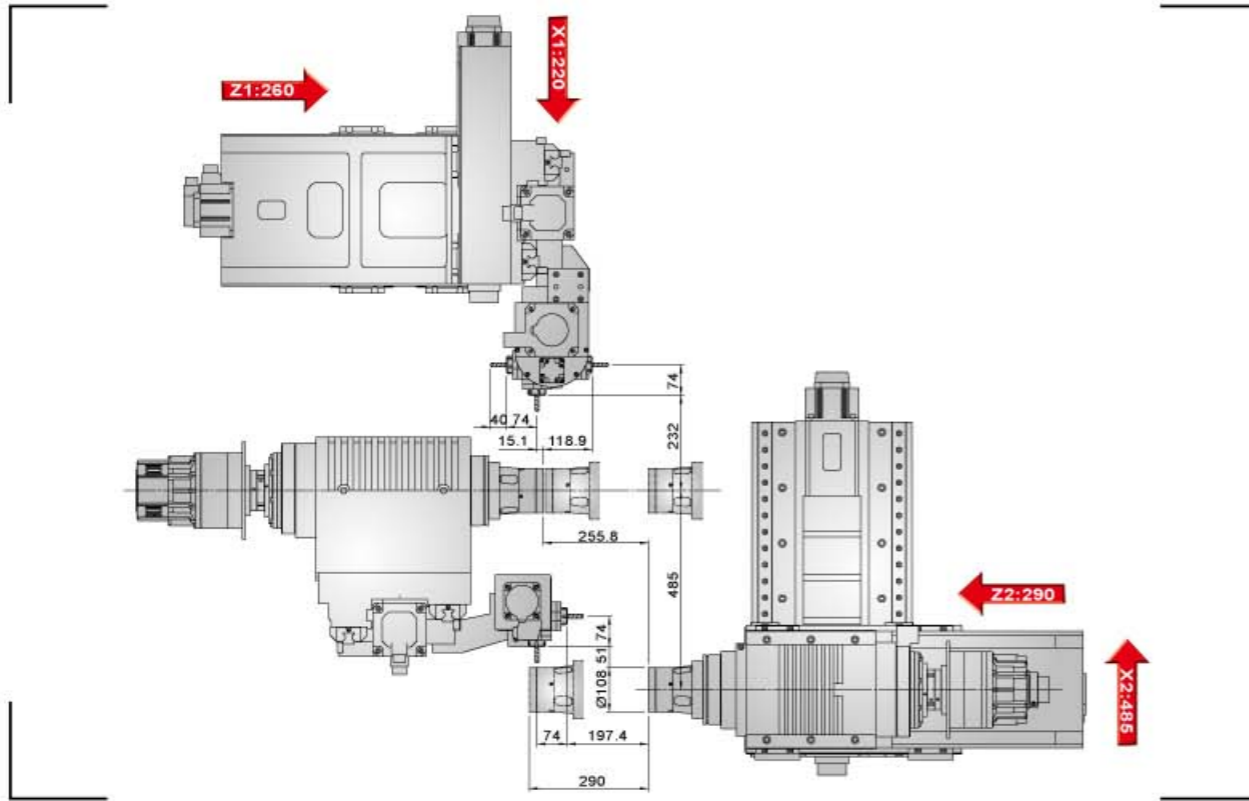
Air-Conditioner for Electrical Cabinet

The air-conditioner is provided to maintain a constant temperature in the electrical cabinet. This ensures stable control performance, and long service life of electronic parts.

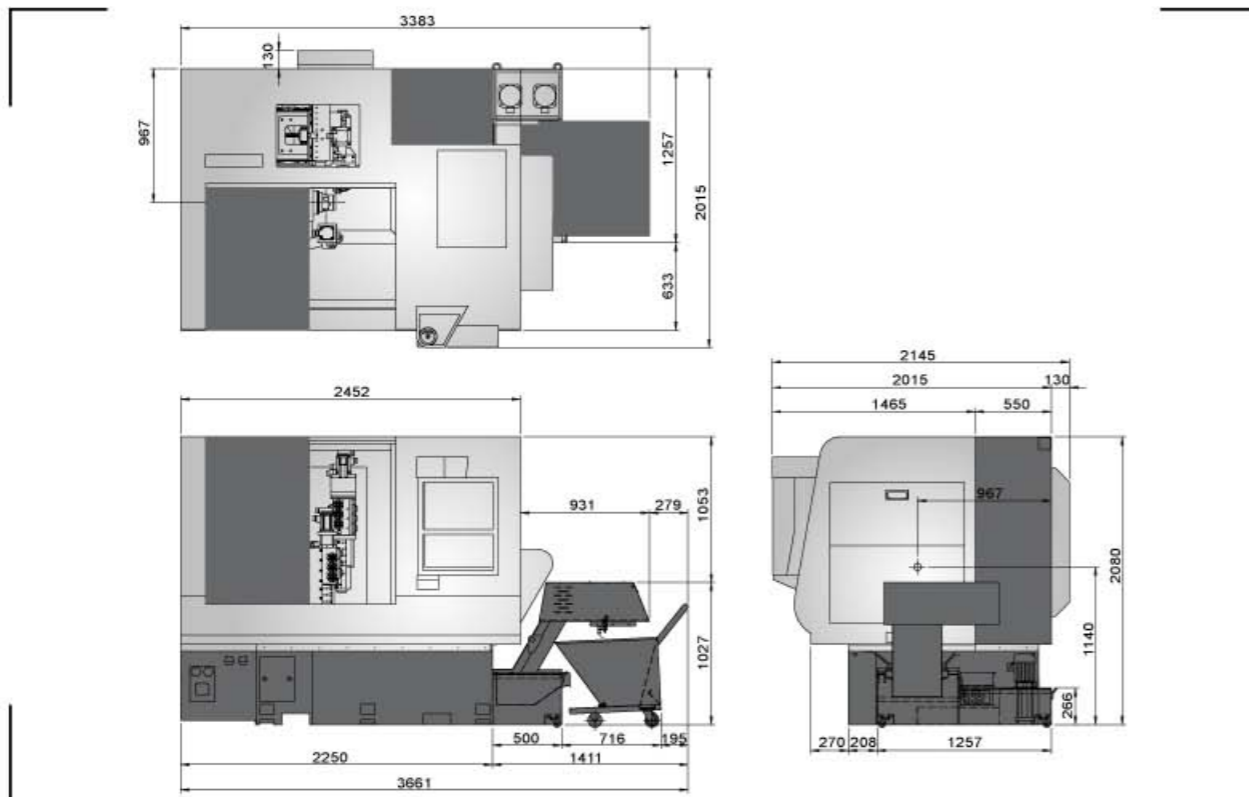
140 Bar High Pressure Coolant Device (Optional)

- The high pressure coolant device is driven by a servo motor with coolant pressure up to 140 bar.
- Programmable pressure control suits various materials cutting.
- 4 ports cooling can be controlled individually.

AXES TRAVEL DIAGRAM



MACHINE DIMENSIONS



MACHINE SPECIFICATIONS

Main Spindle		CY2-52MB
Capacity	Max. bar feeding dia.	Ø52
	Max. spindle rpm	6000rpm
Main Spindle	Spindle servo motor	7.5KW
	Collet of spindle	TRB-52
X1, Y1, Z1-axis	X1, Y1, Z1 axis servo motor	X1: 1.0KW Y1/Z1: 1.5KW
	X1 axis travel	210mm
	Y1 axis travel	460mm
	Z1 axis travel	250mm
	X1, Y1, Z1 rapid travel speed	30M/Min
Side Mill	No. of axial and radial driven tool	12
	Axial and radial live tooling motor	3.5KW
	Axial and radial live tooling Max. rpm	6000rpm
	Axial and radial live tooling size	ER-20
O.D. Tool	No. of O.D. turning tool	5
	O.D. turning tool size	20mm
I.D. Tool	No. of I.D. turning tool	4
	I.D. turning tool size	Ø25
Sub Spindle		
Capacity	Max. bar feeding dia.	Ø52
	Max. spindle rpm	6000rpm
Sub-Spindle	Spindle servo motor	7.5KW
	Collet of spindle	TRB-52
X2, Y2, Z2-axis	X2, Y2, Z2 axis servo motor	X2/Z2: 1.0KW Y2: 1.5KW
	X2 axis travel	480mm
	Y2 axis travel	460mm
	Z2 axis travel	270mm
	X2, Y2, Z2 rapid travel speed	30M/Min
Side Mill	No. of radial driven tool	3
	No. of axial driven tool	3
	Axial and radial live tooling motor	2.0KW
	Axial and radial live tooling Max. rpm	6000rpm
	Axial and radial live tooling size	ER-20
O.D. Tool	No. of O.D. turning tool	4
	O.D. turning tool size	20mm
I.D. Tool	No. of I.D. turning tool	4
	I.D. turning tool size	Ø25
Appearance		
	Machine size (includes chip conveyor)	3383 x 2145 x 2080 mm
	N.W. (includes chip conveyor)	6000 KGS

STANDARD ACCESSORIES

- Tool kit & box
- Drilling shaft ER20 x 4
- Tool sleeve (Ø6,8,10,12,16,20) 2 pcs each
- Collet chuck device
- Auto bar feeder interface
- Finished parts catcher & conveyor
- Cutting fluid device
- Auto power breaker
- Hydraulic cylinder stroke inspection device
- Cutting fluid inspection device
- Cross side live tooling device
- Front side live tooling device
- Rear machining device
- Sub spindle air-blowing device & finished parts ejector
- Air-conditioner for electrical cabinet
- Gang type tool holder
- Built-in spindle (main spindle & sub spindle)
- Chiller for main spindle
- Oil mist lube system
- Steel belt chip conveyor & cart

OPTIONAL ACCESSORIES

- Voltage stabilizer / transformer (52KVA)
- High pressure coolant device
- B axis device
- Bar feeder